



Leon Coffee Grinders

Commercial Catalogue 2024

Innovation within tradition.



Ceado si è evoluta nel tempo integrando esperienza e tecnologie, per realizzare prodotti orgogliosamente **Made in Italy**.

Leon rappresenta l'offerta Ceado destinata ad un pubblico professionale tradizionale, price-oriented e affezionato a macinacaffè on-demand e macinadosatori.

Ceado has evolved over time by integrating experience and technologies to create products proudly **Made in Italy**.

Leon represents Ceado's offering intended for a traditional professional audience, price-oriented and fond of on-demand coffee grinders and doser grinders.





Inspired by a glorious history.

Leon, un tributo che Ceado ha voluto fare a **Venezia** nel **1600° anno** dalla sua fondazione, per ringraziarla di essere sua fonte di ispirazione continua con la sua storia e coraggiosa bellezza.

Leon, a tribute that Ceado wanted to make to **Venice** on the **1600th anniversary** of its founding, to thank it for being a continuous source of inspiration with its history and courageous beauty.

ceado.

On Demand Grinders

Un affidabile compagno di lavoro.

La grande esperienza nel design tecnico di prodotto garantisce alti livelli di usabilità per gli utilizzatori professionali. Macchinari di precisione e massimo controllo dei processi produttivi assicurano le migliori performance dei prodotti Leon.

A reliable work companion.

The extensive experience in technical product design ensures high levels of usability for professional users. Precision machinery and maximum control of production processes guarantee the best performance of Leon products.



Overall Features

On Demand Grinder

RELIABILITY

Struttura in lega leggera, motore asincrono con protezione termica e campana in policarbonato. I materiali migliori con la più **alta affidabilità**.

Light alloy structure, asynchronous motor with thermal protection, and polycarbonate hopper. The best materials with the **highest reliability**.

NEW TOUCH INTERFACE

La nuova interfaccia touch, pensata per gli utilizzatori, rende facile macinare il caffè. Il **display touch** unito ad una macinatura di eccellenza porta il sapore sulla punta delle tue dita.

The new touch interface, designed for users, makes grinding coffee easy. The **touch display**, combined with excellent grinding, brings the flavor to your fingertips.

STEADY LOCK GRINDER

Il sistema, unico al mondo, che assicura in ogni condizione di stress lavorativo la **costante distanza fra le macine**, permettendo di conservare la granulometria impostata.

The system, unique in the world, that ensures a **constant distance between the burrs** under any working stress condition, allowing the set grind size to be maintained.



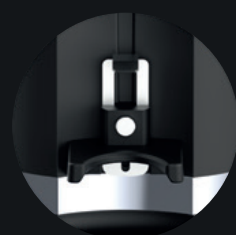
800 RS

On Demand Grinder



Ø 83 Flat burrs
Red Speed

ceado. original burrs



PFA
Version available

800 RS

On Demand Grinder

Macinacaffè estremamente robusto che garantisce elevate performance in fatto di produttività, adatto a **locali alto vendenti**.

An extremely robust coffee grinder that ensures outstanding productivity, designed for **high-turnover establishments**.

Technical Data

Voltage / Alimentazione	220-240V • 50-60 hz
Power / Motore	500 W
Rpm 50hz / 60hz	1480 / 1700
Average Output (g/s)* Net	3,5 (50hz) / 4,2 (60hz)
weight / Peso netto	11,0 kg
Gross weight / Peso lordo	12,6 kg
Dimensions	178 x 212 x 620h mm
Burrs / Macine	Ø 83 Flat burrs Red Speed
Hopper / Tramoggia	Capacity 1600 g
Grinding adjustment type	Micrometrical stepless
Dose setting	Digital
Display	Touch
Dosing	Free and Pre-set
StartDose adjustment	Pulse button

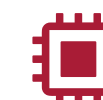
Note: Additional voltage models available.



Features



Steady
Lock



Touch
Display



Radiation
Heat

LEON

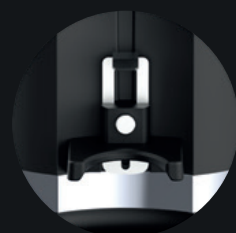
800

On Demand Grinder



Ø 83 Flat burrs

ceado. original burrs



PFA
Version available

800

On Demand Grinder

Macinacaffè estremamente robusto che garantisce elevate performance in fatto di produttività, adatto a **locali alto vendenti**.

An extremely robust coffee grinder that ensures outstanding productivity, designed for **high-turnover establishments**.

Technical Data

Voltage / Alimentazione	220-240V • 50-60 hz
Power / Motore	500 W
Rpm 50hz / 60hz	1480 / 1700
Average Output (g/s)* Net	3,5 (50hz) / 4,2 (60hz)
weight / Peso netto	11,0 kg
Gross weight / Peso lordo	12,6 kg
Dimensions	178 x 212 x 620h mm
Burrs / Macine	Ø 83 Flat burrs
Hopper / Tramoggia	Capacity 1600 g
Grinding adjustment type	Micrometrical stepless
Dose setting	Digital
Display	Touch
Dosing	Free and Pre-set
StartDose adjustment	Pulse button

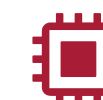
Note: Additional voltage models available.



Features



Steady
Lock



Touch
Display



Radiation
Heat

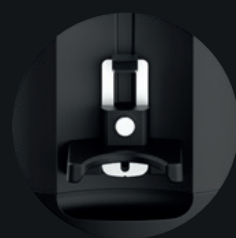
700

On Demand Grinder



Ø 64 Flat burrs

ceado. original burrs



PFA
Version available

700

On Demand Grinder

Dedicato ai **locali medio vendenti** che cercano il giusto rapporto di produttività e praticità garantita nel tempo.

Designed for **medium-turnover establishments** seeking the right balance over time between productivity and guaranteed long-term practicality.

Technical Data

Voltage / Alimentazione	220-240V • 50-60 hz
Power / Motore	400 W
Rpm 50hz / 60hz	1480 / 1700
Average Output (g/s)* Net	3 (50hz) / 3,6 (60hz)
weight / Peso netto	9,8 kg
Gross weight / Peso lordo	11,0 kg
Dimensions	178 x 212 x 590h mm
Burrs / Macine	Ø 64 Flat burrs
Hopper / Tramoggia	Capacity 1600 g
Grinding adjustment type	Micrometrical stepless
Dose setting	Digital
Display	Touch
Dosing	Free and Pre-set
StartDose adjustment	Pulse button

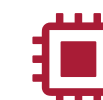
Note: Additional voltage models available.



Features



Steady
Lock



Touch
Display

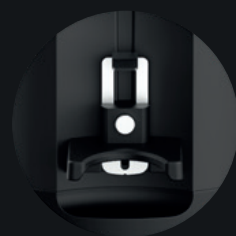
600

On Demand Grinder



Ø 64 Flat burrs

ceado. original burrs



PFA
Version available

600

On Demand Grinder

Adatto anche nei **momenti di lavoro più congestionati**, preservando tutto l'aroma del caffè, dal chicco tostato all'estrazione.

Even **during the busiest times**, it retains the coffee's full aroma, from roasting to extraction.

Technical Data

Voltage / Alimentazione	220-240V • 50-60 hz
Power / Motore	300 W
Rpm 50hz / 60hz	1380 / 1650
Average Output (g/s)* Net	1,7 (50hz) / 2 (60hz)
weight / Peso netto	7,8 kg
Gross weight / Peso lordo	8,9 kg
Dimensions	178 x 212 x 550h mm
Burrs / Macine	Ø 64 Flat burrs
Hopper / Tramoggia	Capacity 600 g
Grinding adjustment type	Micrometrical stepless
Dose setting	Digital
Display	Touch
Dosing	Free and Pre-set
StartDose adjustment	Pulse button

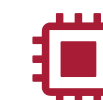
Note: Additional voltage models available.



Features



Steady
Lock



Touch
Display

Doser Grinders

Una continua evoluzione.

L'innovazione per Leon avviene nel rispetto della tradizione: apportare continui miglioramenti al modo tradizionale di fare e di consumare il caffè diventa la sfida per dare massima espressione alla qualità del caffè.

Continuous evolution.

Innovation takes place while respecting tradition for Leon: making continuous improvements to the traditional way of making and consuming coffee becomes the challenge to give the highest expression to the quality of coffee.



Overall Features

Doser Grinder

RELIABILITY

Struttura in lega leggera, motore asincrono con protezione termica e campana in policarbonato. I materiali migliori con la più **alta affidabilità**.

Light alloy structure, asynchronous motor with thermal protection, and polycarbonate hopper. The best materials with the **highest reliability**.

DISTRIBUTION AND CLEANNESS

Il caffè macinato cadrà sempre al posto giusto, in mezzo al portafiltro. Le **sezioni del dosatore** sono state disegnate in modo da compattare la dose.

The ground coffee will always fall in the right place, in the middle of the portafilter. The **doser sections** are designed to compact the dose.

STEADY LOCK GRINDER

Il sistema, unico al mondo, che assicura in ogni condizione di stress lavorativo la **costante distanza fra le macine**, permettendo di conservare la granulometria impostata.

The system, unique in the world, that ensures a **constant distance between the burrs** under any working stress condition, allowing the set grind size to be maintained.



800D RS

800D

700D

800D RS

Doser
Grinder



Ø 83 Flat burrs
Red Speed

ceado. original burrs



800D RS

Doser Grinder

Macinacaffè robusto, dedicato a **locali alto vendenti** che cercano il giusto rapporto tra produttività e praticità, garantite nel tempo.

A robust coffee grinder designed for **high-turnover establishments** seeking the right balance over time between productivity and guaranteed long-term practicality.

Technical Data

Voltage / Alimentazione	220-240V • 50-60 hz
Power / Motore	500 W
Rpm 50hz / 60hz	1480 / 1700
Net weight / Peso netto	12,5 kg
Gross weight / Peso lordo	14,3 kg
Dimensions	200 x 275 x 620h mm
Burrs / Macine	Ø 83 Flat burrs Red Speed
Hopper / Tramoggia	Capacity 1600 g
Grinding adjustment type	Micrometrical stepless
Doser capacity	280 g
Dose adjustment	6 ÷ 9,5 g

Note: Additional voltage models available.



Features



Steady
Lock


LEON

800D

Doser Grinder



Ø 83 Flat burrs

ceado. original burrs



800D

Doser Grinder

Macinacaffè robusto, dedicato a **locali alto vendenti** che cercano il giusto rapporto tra produttività e praticità, garantite nel tempo.

A robust coffee grinder designed for **high-turnover establishments** seeking the right balance over time between productivity and guaranteed long-term practicality.

Technical Data

Voltage / Alimentazione	220-240V • 50-60 hz
Power / Motore	500 W
Rpm 50hz / 60hz	1480 / 1700
Net weight / Peso netto	12,5 kg
Gross weight / Peso lordo	14,3 kg
Dimensions	200 x 275 x 620h mm
Burrs / Macine	Ø 83 Flat burrs
Hopper / Tramoggia	Capacity 1600 g
Grinding adjustment type	Micrometrical stepless
Doser capacity	280 g
Dose adjustment	6 ÷ 9,5 g

Note: Additional voltage models available.



Features



Steady
Lock


LEON

700D

Doser Grinder



Ø 64 Flat burrs

ceado. original burrs



700D

Doser Grinder

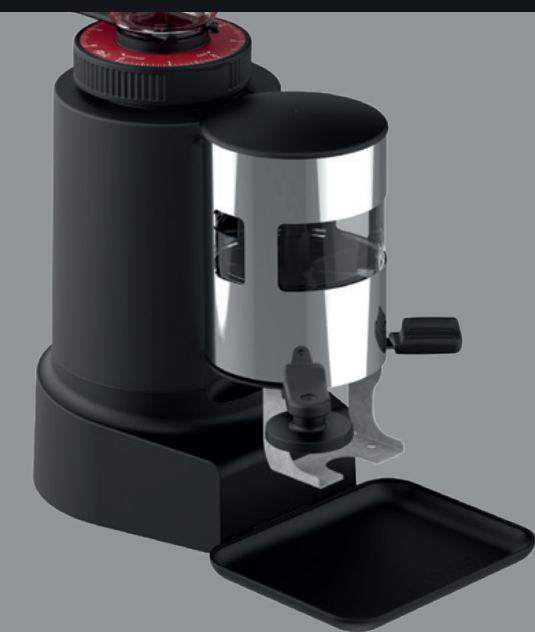
Grazie alla capacità di tramoggia e dosatore, **accompagna senza fatica il lavoro di una macchina a tre gruppi**, riuscendo sempre ad esprimere al meglio le caratteristiche del caffè.

The capacity of the 700D's hopper and doser enables it to **effortlessly keep pace with a three-group machine**, capturing the full flavour and aroma of the coffee every time.

Technical Data

Voltage / Alimentazione	220-240V • 50-60 hz
Power / Motore	400 W
Rpm 50hz / 60hz	1380 / 1650
Net weight / Peso netto	11,0 kg
Gross weight / Peso lordo	12,6 kg
Dimensions	200 x 275 x 590h mm
Burrs / Macine	Ø 64 Flat burrs
Hopper / Tramoggia	Capacity 1600 g
Grinding adjustment type	Micrometrical stepless
Doser capacity	280 g
Dose adjustment	6 ÷ 9,5 g

Note: Additional voltage models available.



Features



Steady
Lock

**LEON**

On Demand Grinders

Technical specifications

Model	800 RS	800	700	600
Voltage	220-240V	220-240V	220-240V	220-240V
	50-60 hz	50-60 hz	50-60 hz	50-60 hz
Power	500 W	500 W	400 W	300 W
Rpm 50hz / 60hz	1480 / 1700	1480 / 1700	1480 / 1700	1380 / 1650
Average output (g/s)*	3,5 (50hz)	3,5 (50hz)	3 (50hz)	1,7 (50hz)
	4,2 (60hz)	4,2 (60hz)	3,6 (60hz)	2 (60hz)
Net weight	11,0 kg	11,0 kg	9,8 kg	7,8 kg
Gross weight	12,6 kg	12,6 kg	11,0 kg	8,9 kg
Dimensions	178x212x620h mm	178x212x620h mm	178x212x590h mm	178x212x550h mm
Burrs	ø83 Flat burrs	ø83 Flat burrs	ø64 Flat burrs	ø64 Flat burrs
	Red Speed			
Hopper	Capacity 1600 g	Capacity 1600 g	Capacity 1600 g	Capacity 600 g
Grinding adjustment type	Micrometrical	Micrometrical	Micrometrical	Micrometrical
	stepless	stepless	stepless	stepless
Dose setting	Digital	Digital	Digital	Digital
Display	Touch	Touch	Touch	Touch
PFA	Available	Available	Available	-
Dosing	Free & Pre-set	Free & Pre-set	Free & Pre-set	Free & Pre-set
Start	Pulse button	Pulse button	Pulse button	Pulse button

Note: Additional voltage models available.

*Average output is calculated at standard Italian Espresso Consistency

Doser Grinders

Technical specifications

Model	800D RS	800D	700D
Voltage	220-240V	220-240V	220-240V
	50-60 hz	50-60 hz	50-60 hz
Power	500 W	500 W	400 W
Rpm 50hz / 60hz	1480 / 1700	1480 / 1700	1380 / 1650
Net weight	12,5 kg	12,5 kg	11,0 kg
Gross weight	14,3 kg	14,3 kg	12,6 kg
Dimensions	200x275x620h mm	200x275x620h mm	200x275x590h mm
Burrs	ø83 Flat burrs	ø83 Flat burrs	ø64 Flat burrs
Hopper			
	Capacity 1600 g	Capacity 1600 g	Capacity 1600 g
Grinding adjustment type	Micrometrical	Micrometrical	Micrometrical
Doser capacity	280 g	280 g	280 g
Dose adjustment	6 ÷ 9,5 g	6 ÷ 9,5 g	6 ÷ 9,5 g

Note: Additional voltage models available.

*Average output is calculated at standard Italian Espresso Consistency

Certifications list

Please confirm with Ceado srl if your product of choice has one of the certification below:



info@leonvenezia.com

www.leonvenezia.com



Spinea - Venezia, Italy
Via della Costituzione, 111
T +39 041 5030767 F +39 041 5038413



**hand made
in venice.**

Leon By Ceado srl All rights reserved - June 2024

Data are indicative, referred to our internal tests. Designs and specifications of the products in this leaflet can be modified without prior notice. I dati riportati sono indicativi, riferiti a test interni. L'azienda si riserva di modificare in qualunque momento e senza preavviso le caratteristiche dei prodotti.

